

5040/5080 Series Globe and Angle Valves

Reliable bubble-tight performance in continuous service applications

Features

- Bubble tight shutoff
- Unique seat design allows for use in metering, throttling or full open/closed operation
- Teflon® seat is encapsulated to protect against wire drawing and other damage
- Low operating torque
- Ambient and cryogenic models
- Easy to maintain and panel mount
- Globe and angle configurations



Specifications

- Pressure 0 to 6,000 psi
- Proof 1½ x inlet
- Burst 4 x inlet
- C_v

5040	1.16	0.34" orifice
5045	1.63	0.34" orifice
5080	3.79	0.50" orifice
5085	4.77	0.50" orifice
- Temperature Ambient -15°F to +150°F
Cryogenic -420°F to +150°F
- Leakage Ambient – Bubble-tight, internal and external
Cryogenic – 10 sccm GHE internal, bubble-tight external

Materials of Construction

- Body 316 Stainless Steel
- Stem A-286 Stainless Steel
- Seat Retainer 316 Stainless Steel
- Seat Teflon®
- Bonnet 316 Stainless Steel
- Dust Protector Nylon
- Seals Buna-N®, Viton® or Ethylene Propylene with Teflon® backup rings
- Seals (Cryogenic) Teflon®, Elgiloy®

Buna-N® is a registered trademark of E. I du Pont de Nemours & Company
Viton® is a registered trademark of DuPont Dow Elastomers
Teflon® is a registered trademark of E.I. DuPont
Elgiloy® is a registered trademark of Combined Metal of Chicago, LLC

Applications

Ground Support Equipment • Research and Development • Shipboard Systems
Process Sampling Systems • Chemical and Petrochemical • Test Stands



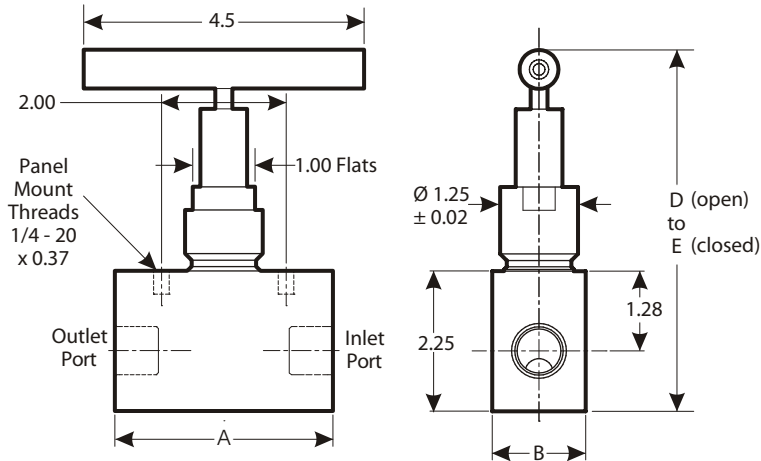
www.usparaplate.com • 888-510-9690

U.S. Para Plate valves and regulators are used where performance and reliability are a must. Proven for over 30 years in the most demanding Aerospace and Industrial applications.

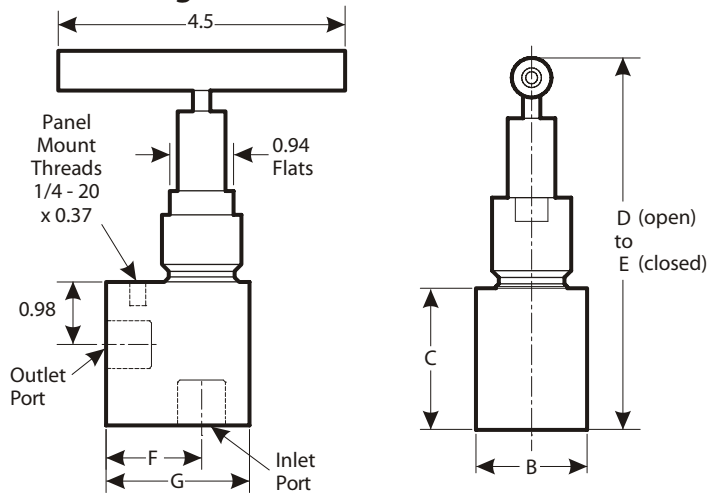


5040/5080 Series Globe and Angle Valves

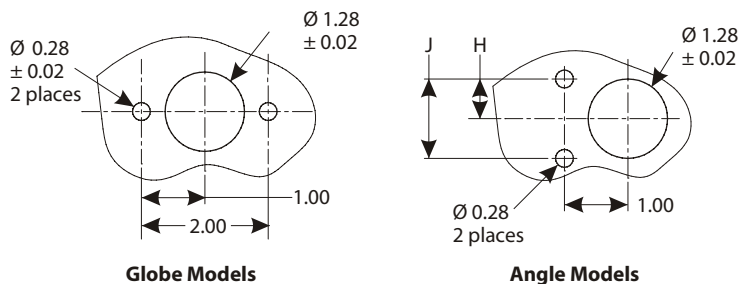
5040/5080 Globe Models



5045/5085 Angle Models



Panel Mount Details



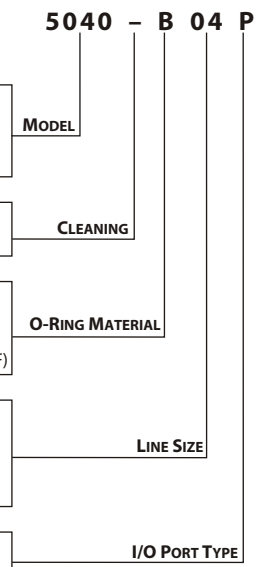
Dimensions

	5040 Globe	5080 Globe	5045 Angle	5085 Angle
A	1/4" 3.00	3/4" 3.75	—	—
	1/2" 3.50	1" 4.00	—	—
B	1.75	1.75	1.50	1.75
C	2.25	2.25	2.25	2.63
D	6.2	6.2	6.3	6.7
E	5.8	5.8	5.9	6.3
F	—	—	1.50	1.88
G	—	—	2.25	2.75
H	—	—	0.50	0.63
J	—	—	1.00	1.25

Ordering Information

5040 Globe Valve
5045 Angle Valve
5080 Globe Valve
5085 Angle Valve

see Line Size



— = General service
X = High level precision cleaning

B = Buna-N® (-30° to +180°F)
V = Viton® (-15° to +200°F)
E = EPR (-30° to +180°F)
C = Cryogenic (-420° to +200°F)

04 = 1/4"
06 = 3/8"
08 = 1/2"
12 = 3/4"
16 = 1"

T = MS33649 female tube
P = NPT female

For Oxygen service, contact factory.
(Bold Italic Type indicates standard options)

